

# Yngri

## JUNIOR

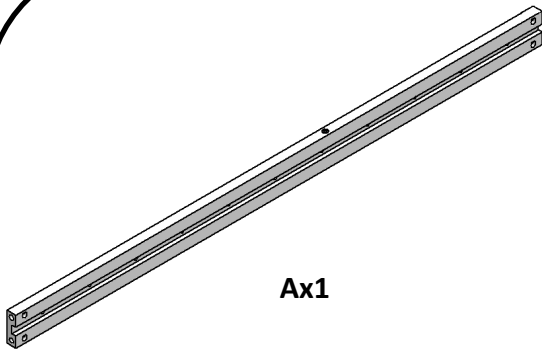
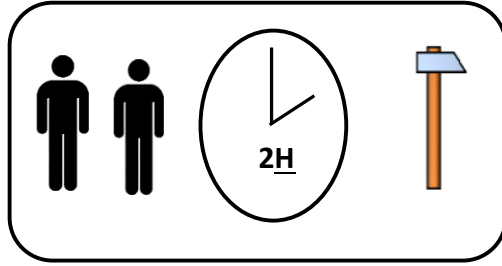
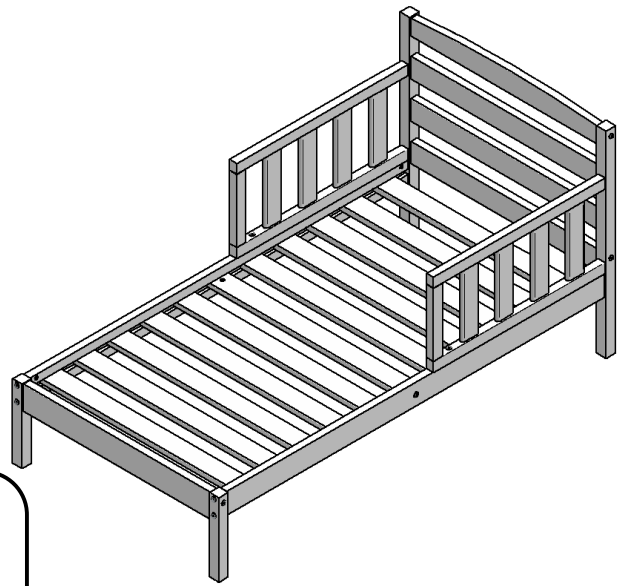
SENG 70 x 140 CM

SÄNG 70 x 140 CM

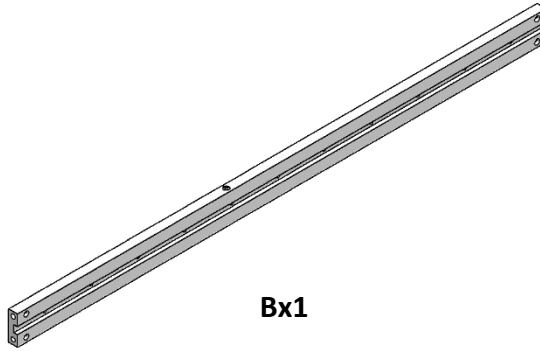
BED 70 x 140 CM

BH ITEM NO: 11035985

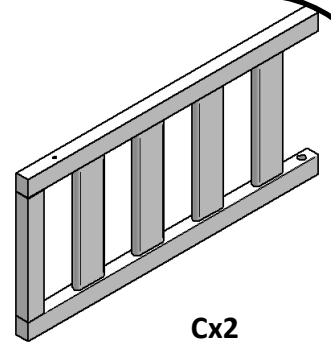
YNGRI ITEM NO: 5549366



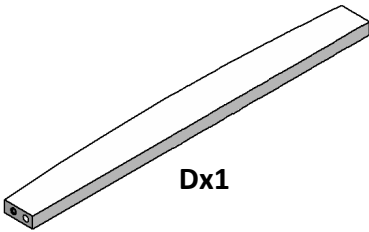
Ax1



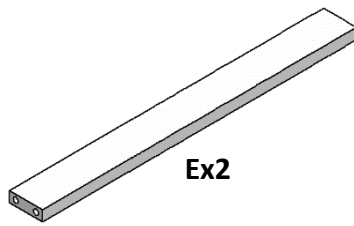
Bx1



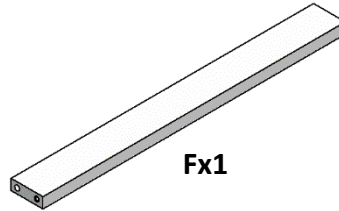
Cx2



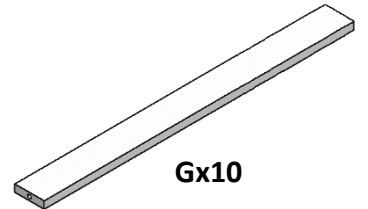
Dx1



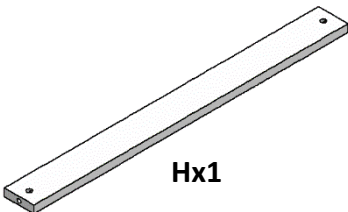
Ex2



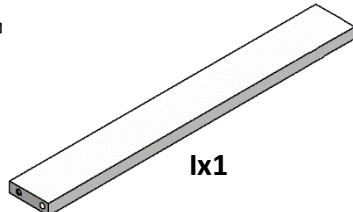
Fx1



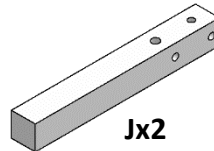
Gx10



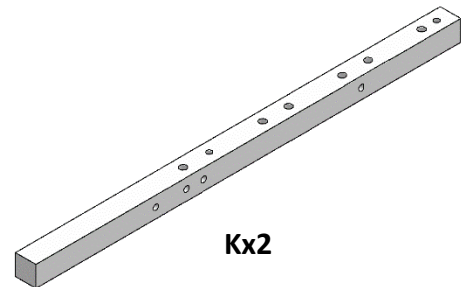
Hx1



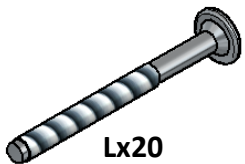
Ix1



Jx2



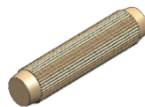
Kx2



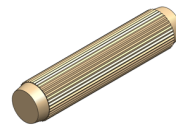
Lx20



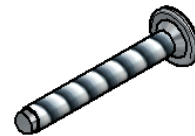
Mx12



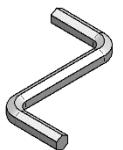
Nx24



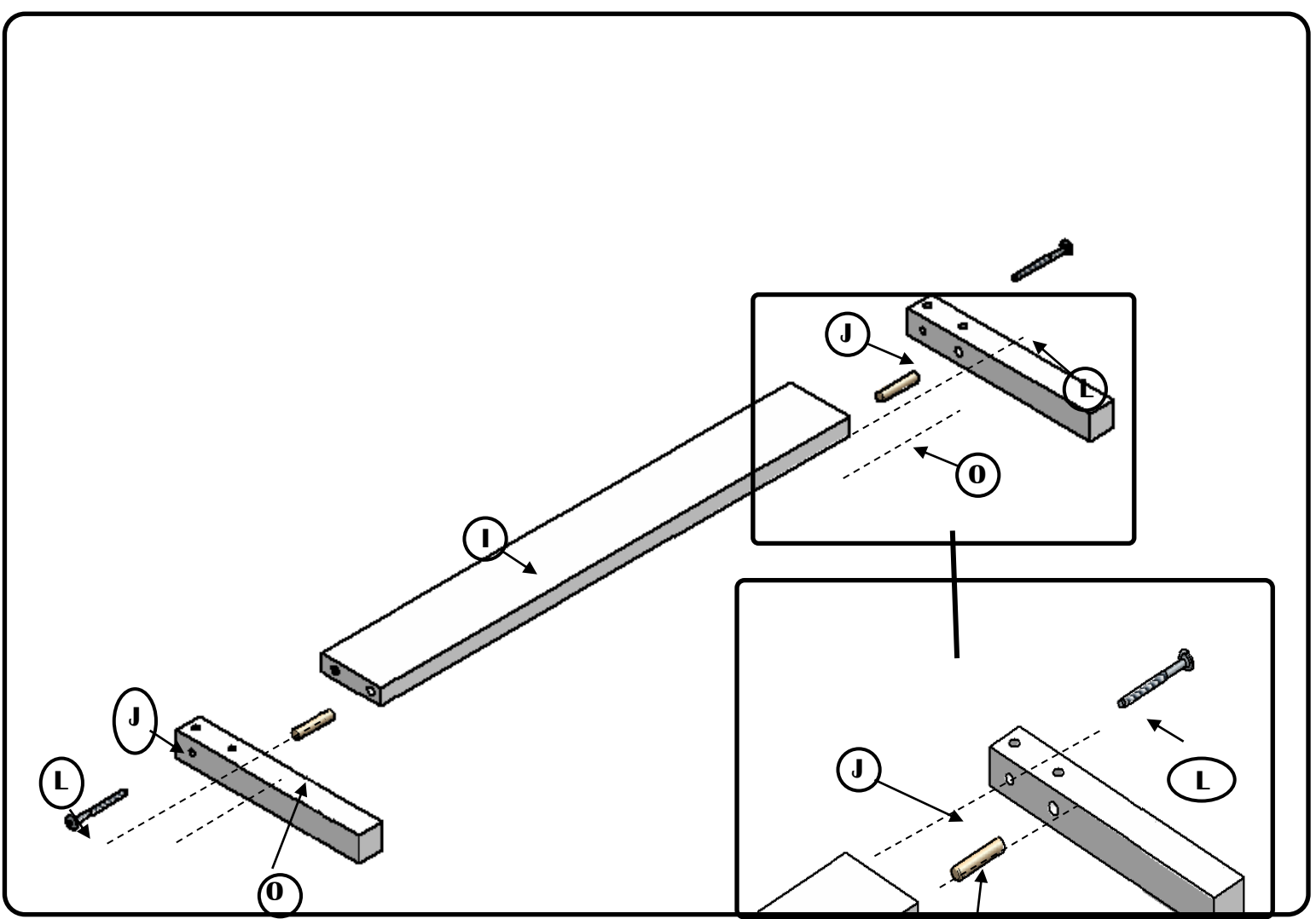
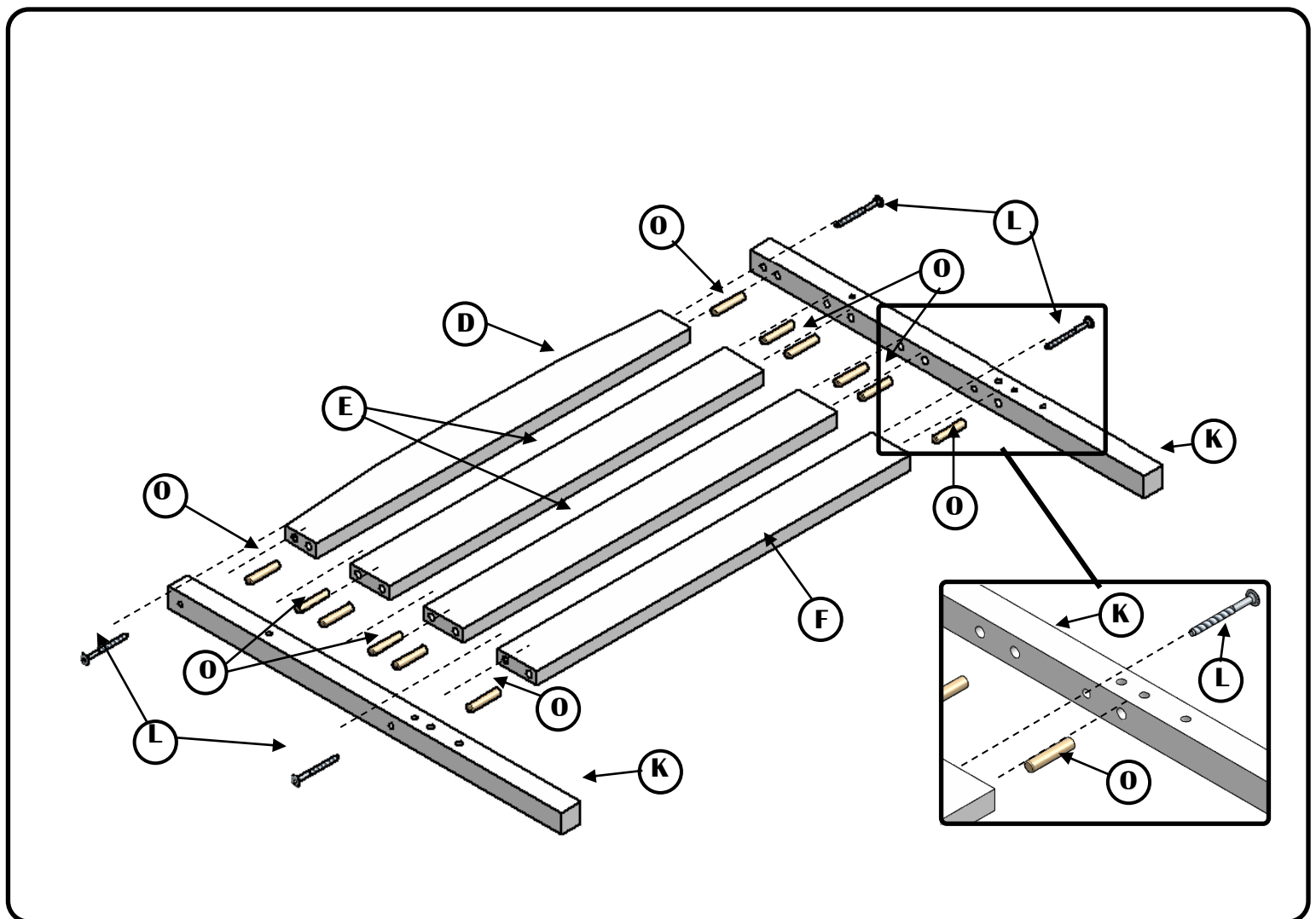
Ox12

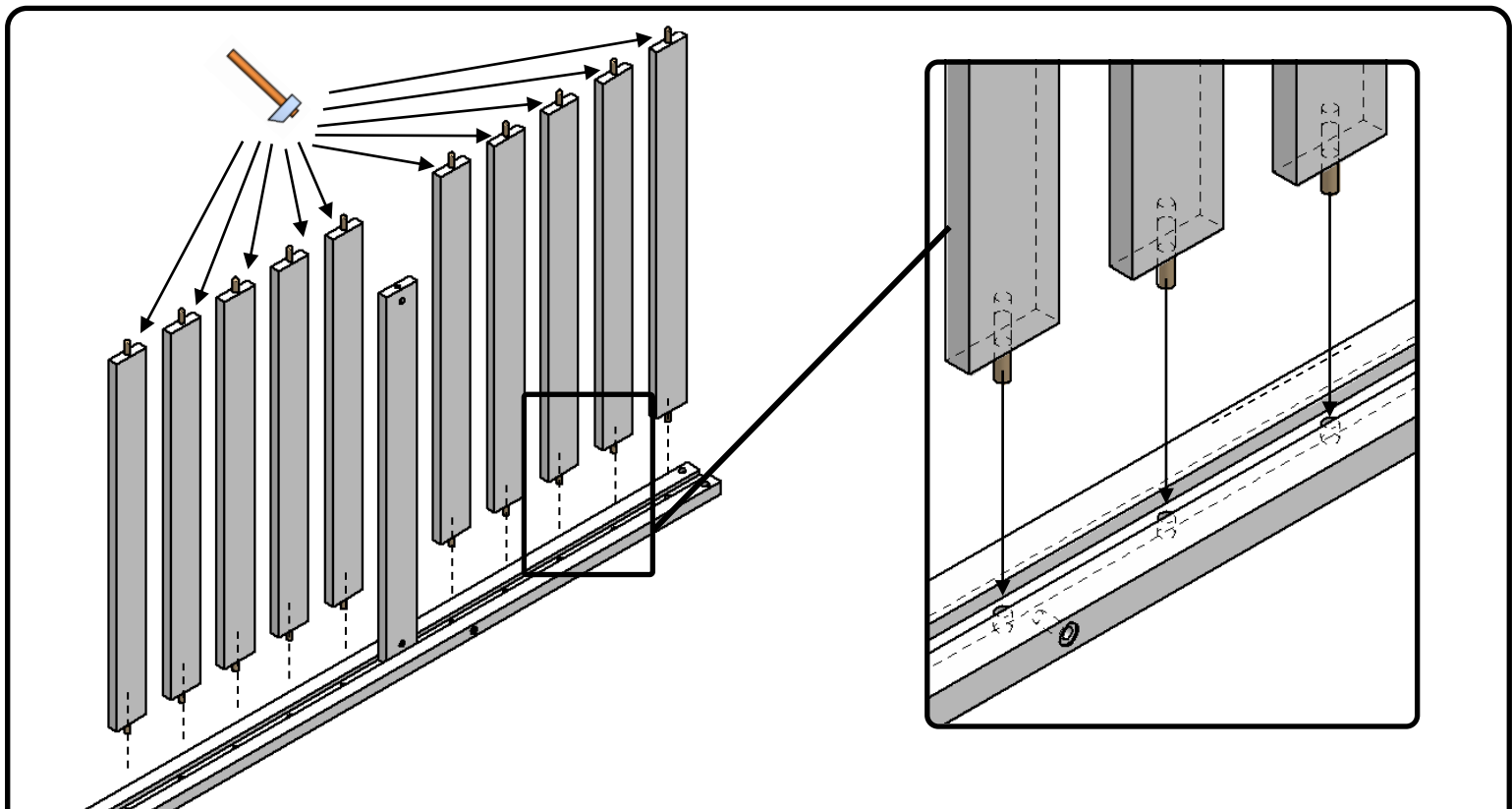
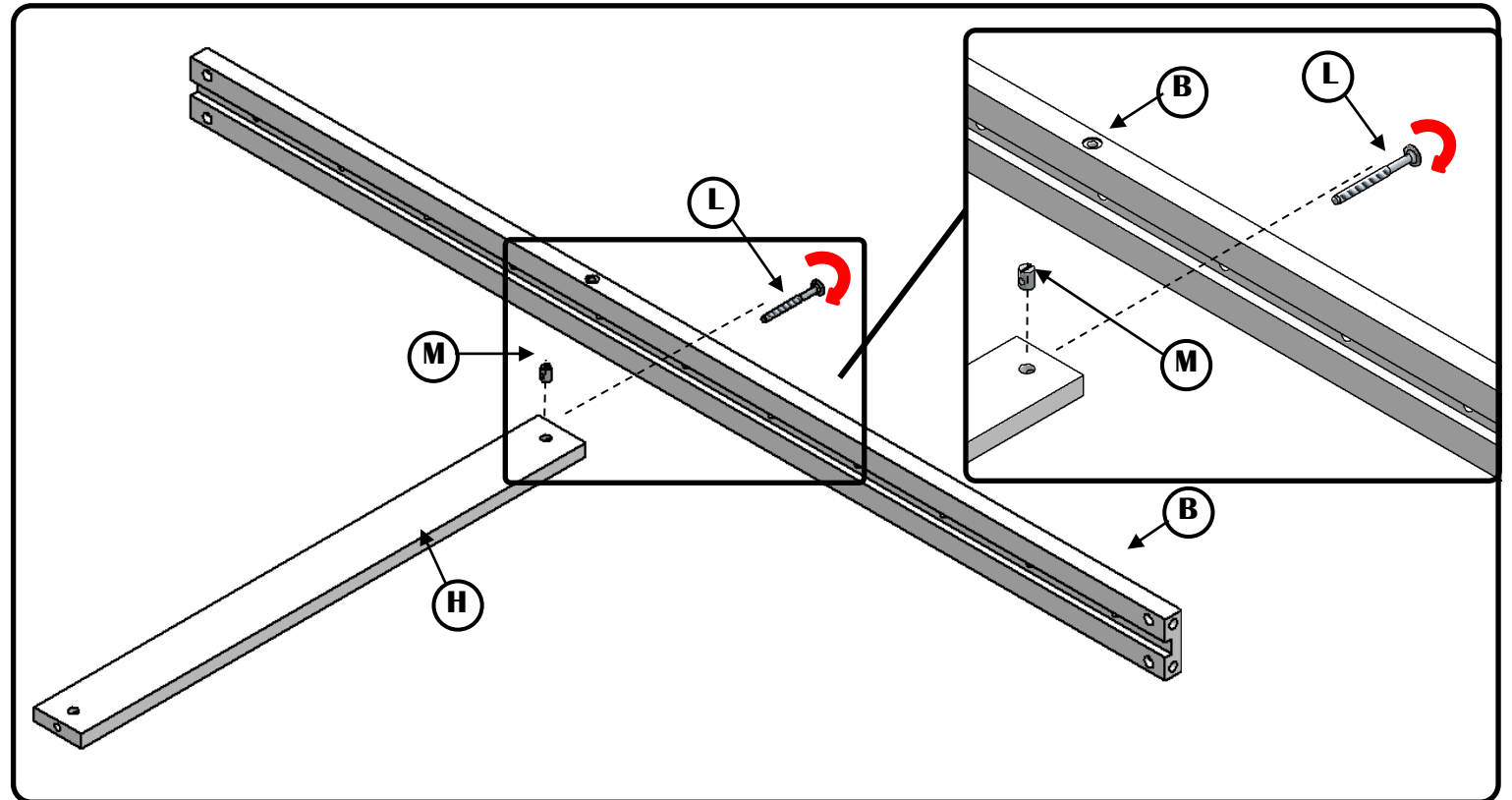
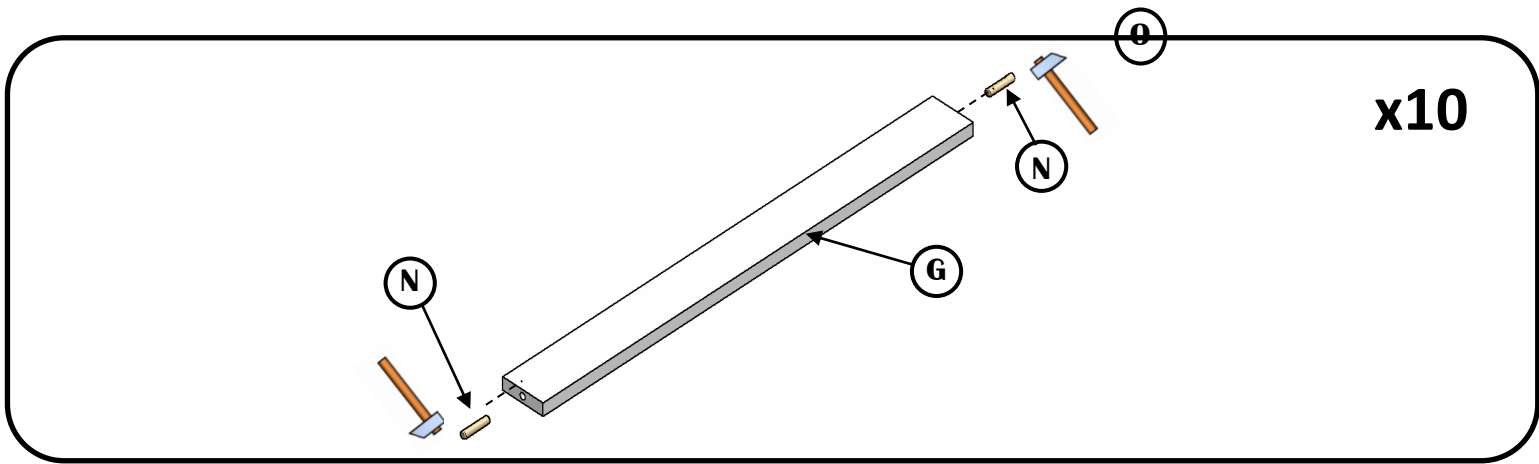


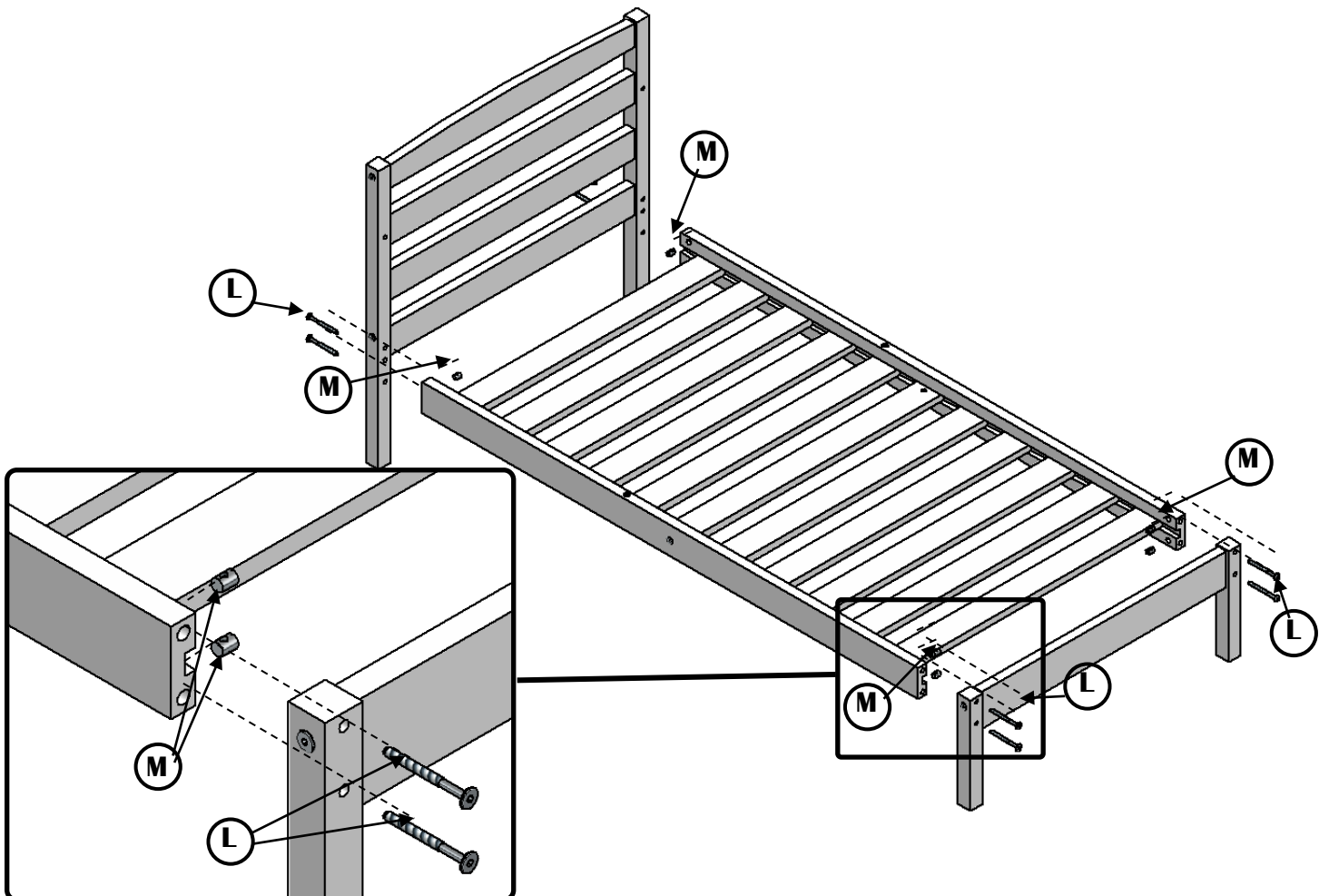
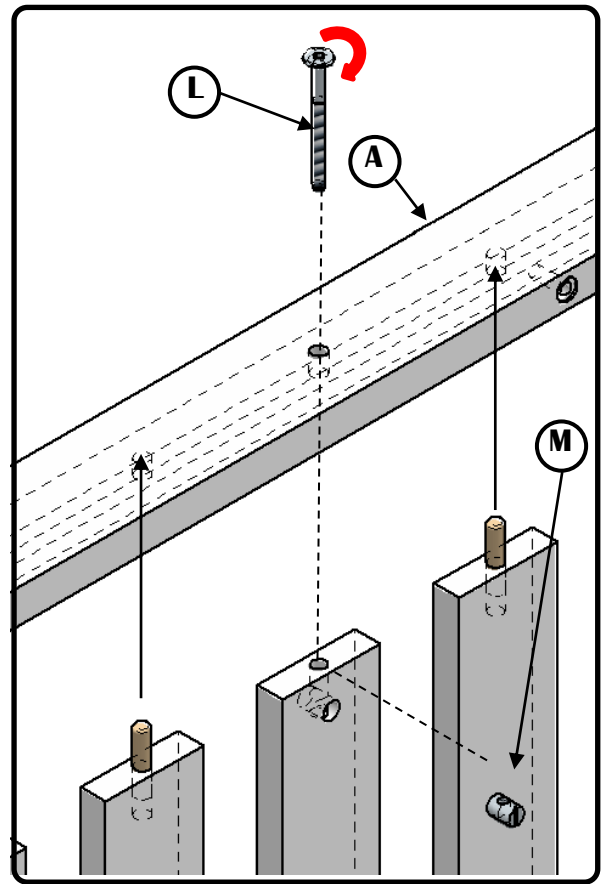
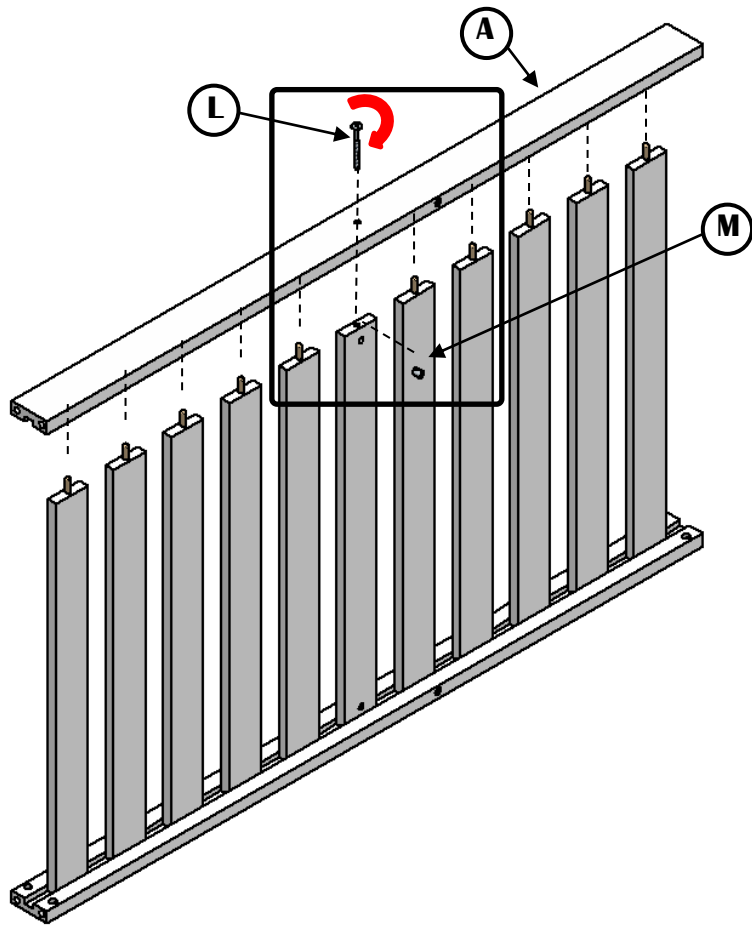
Px2

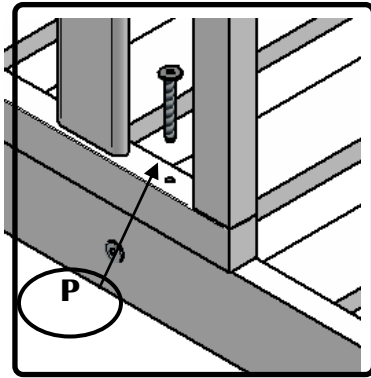
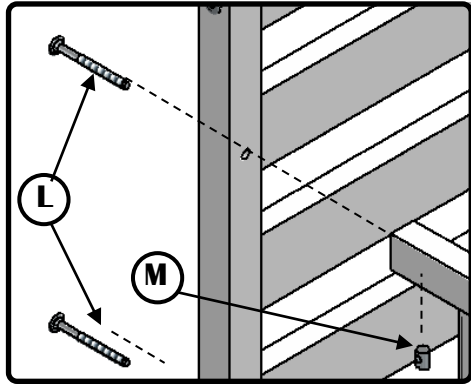
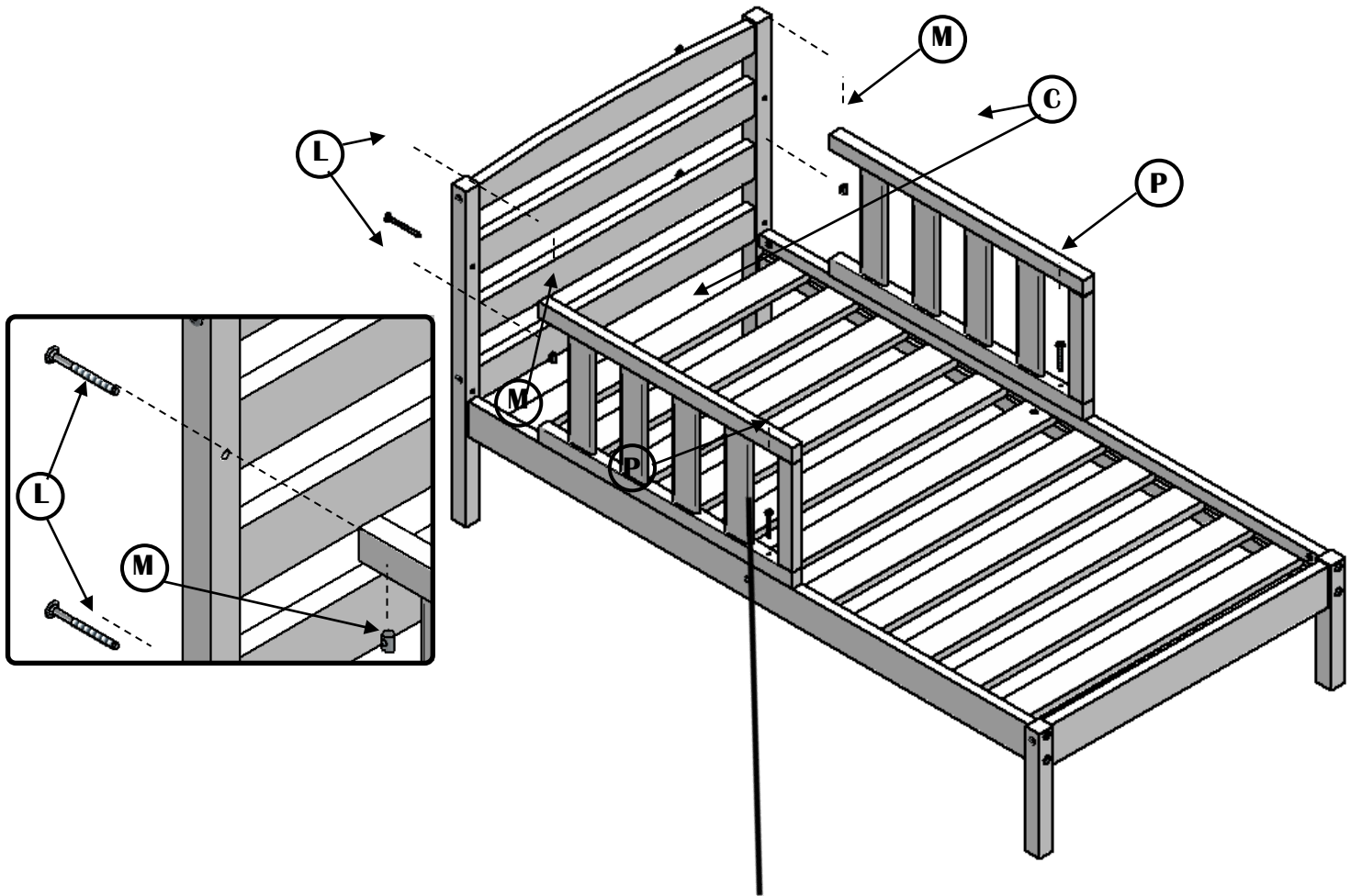


Rx1











**NO:**  
**TA VARE PÅ FOR FREMTIDIG REFERANSE – LES NØYE MERK!**

**Advarsel:** Forsikre deg om at sengen ikke plasseres ved siden av åpne flammer eller andre varmekilder, som f.eks. elektriske eller gassdrevne varmeelement o.l. Sengen skal ikke plasseres ved siden av møbler eller i nærheten av vindu.

Merk: Sengen skal ikke brukes dersom noen deler mangler eller er skadet. Bruk kun reservedeler fra produsent.

**Advarsel:** La ikke noe ligge igjen i sengen og plasser den ikke i nærheten av gjenstander som kan medføre kvelningsrisiko som for eksempel snører, gardinfester og lignende. Påse også at barnet ikke kan få føtter eller armer klem mellom sengen og andre gjenstander.

**Advarsel:** Bruk kun en madrass i sengen.

Madrassen som brukes i denne sengen må være egnet for senger på 70 x 140 cm, og skal ikke være tykkere enn 10 cm.

Kontroller etter montering at alle deler sitter som de skal. Sengen skal kontrolleres regelmessig, og ved behov skal skruene etterstrammes.

Stell: Rengjøres med en fuktig svamp og lunket såpevann. Bruk aldri skuremiddel.

**I HENHOLD TIL EN 716 (2019)**



**SE:**

**VIKTIG! BEHÅLL FÖR FRAMTIDA ANVÄNDNING – LÄS NOGGRANT**

**Varning:** Se till att inte placera spjålsängen nära en öppen låga eller andra höga värmekällor, såsom elvärmare, gasolvärmare, etc.

**Varning:** Använd inte spjålsängen om några komponenter är trasiga, skadade eller saknas och använd endast reservdelar godkända av tillverkaren.

**Varning:** Lämna ingenting i spjålsängen och placera den inte nära någon produkt som kan klämma barnets fötter eller utgöra en kvävningsrisk eller strypningsrisk, till exempel snören, gardinsnören etc.

**Varning:** Använd inte mer än en madrass i spjålsängen.

Madrassen som ska användas med denna spjålsäng måste vara avsedd för 70 cm x 140 cm spjålsängar och får inte överstiga 10 cm i höjd.

Efter montering, kontrollera att alla monteringsmekanismer är korrekt åtdragna och kontrolleras regelbundet, och efter dras vid behov.

**Skötsel:** för rengöring med en fuktig svamp och varmt tvålatten. Använd aldrig slipmedel.

**Uppfyller säkerhetskraven EN 716 (2019)**



**ENG:**

**IMPORTANT! RETAIN FOR SUBSEQUENT CONSULTATION – READ CAREFULLY**

**Warning:** Take care not to place the cot near to a naked flame or other high heat sources, such as electric heaters, gas heaters, etc.

**Warning:** Do not use the cot if any components are broken, damaged or missing and only use spare parts approved by the manufacturer.

**Warning:** Do not leave anything in the cot and do not place it near to any product that may trap the child's feet or present a suffocation or strangulation hazard, for example strings, curtain cords, etc.

**Warning:** Do not use more than one mattress in the cot.

The mattress to be used with this cot must be designed for 70 cm x 140 cm cots and must not exceed 10 cm in height.

After assembly, check that all the assembly mechanisms are correctly tightened and are checked regularly, and retightened if necessary.

**Care:** for clean using a damp sponge and warm, soapy water. Never use any abrasive products.

**Conforms to safety requirements EN 716 (2019)**

MADE IN POLAND FOR

BARNAS HUS NORGE AS  
HELSEFYR ATRIUM  
INNSPURTEN 15  
0663 OSLO  
NORWAY